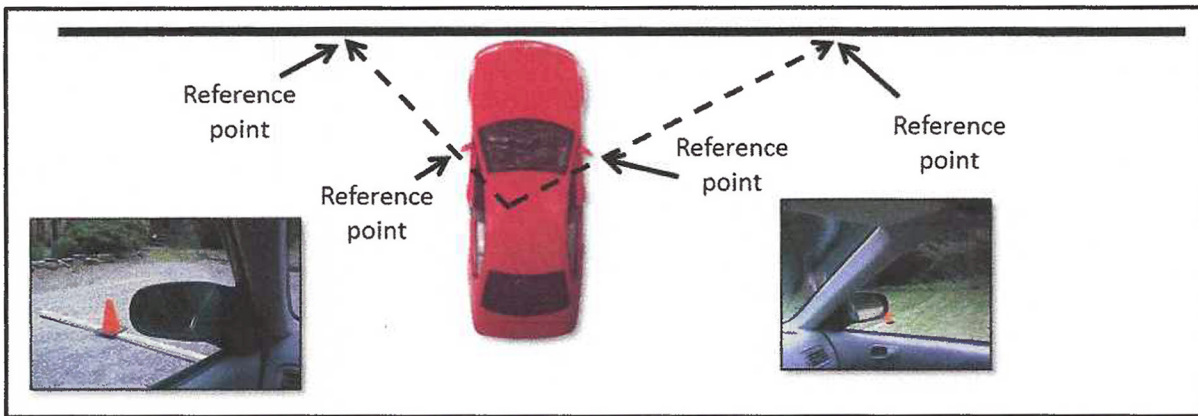


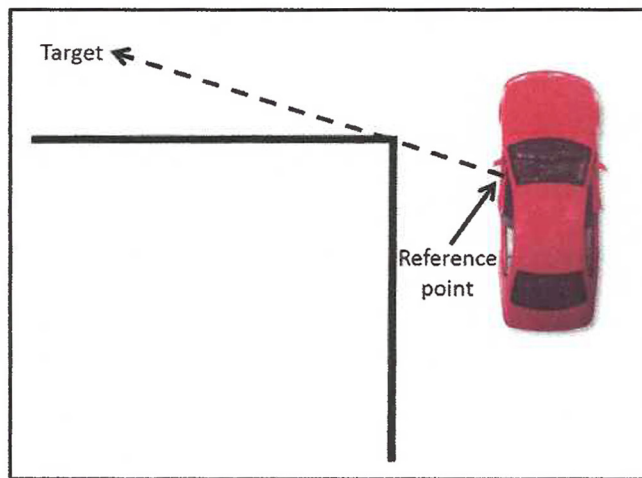
Vehicle Reference Points

Front Vehicle Reference Points

Drivers can develop reference points to determine where the front end of the vehicle is at intersections, where the car should be in a stopped position, where the car should stop in perpendicular parking, or when placing the front of the vehicle even with a line or curb. The curb or line should appear to run under the driver or passenger side view mirror. The front vehicle reference point is a reference point to know where to stop the vehicle.



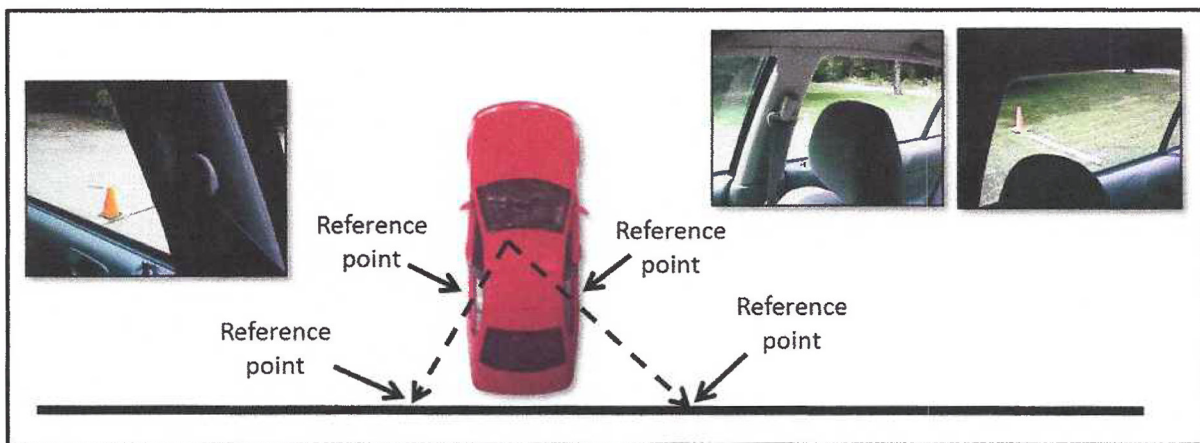
Drivers can develop reference points to determine when the front end of your vehicle is a few feet beyond the curb line and where you should begin to turn the steering wheel at intersections. The curb or line should appear to run under the driver side view mirror, and the driver can see where to go without the driver's vision cutting across the curb line. This is the point at which the driver should begin to turn the steering wheel to make the left turn.



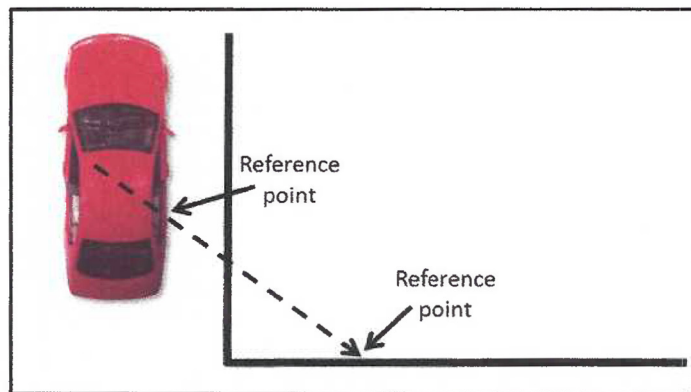
Vehicle Reference Points

Rear Vehicle Reference Points

To determine when the rear of your vehicle is 3-6 inches away from a line when backing, perpendicular parking or placing the rear of the vehicle to a line or curb, the driver can develop reference points. When the driver turns his/her head and looks over the left shoulder, the curb or line should appear to be centered near the bottom of the rear door window.



To determine when the rear of the vehicle is three feet away from a line when backing and turning, drivers can develop reference points. When a driver turns his/her head and looks over the right shoulder, he/she will see the line disappear in the rear window corner post. This is the point where drivers should begin turning the steering wheel when backing around a corner.

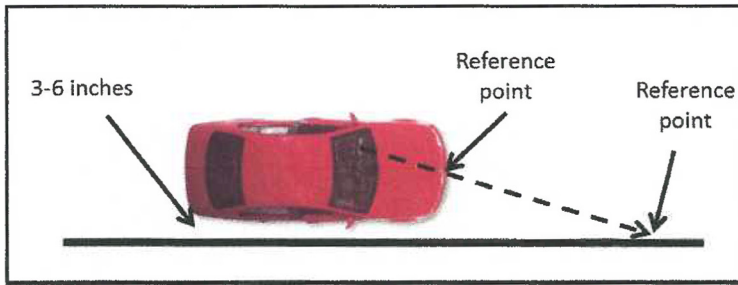


**Vehicle Reference Points** **Fact Sheet 2.6 continued**  
Content Information

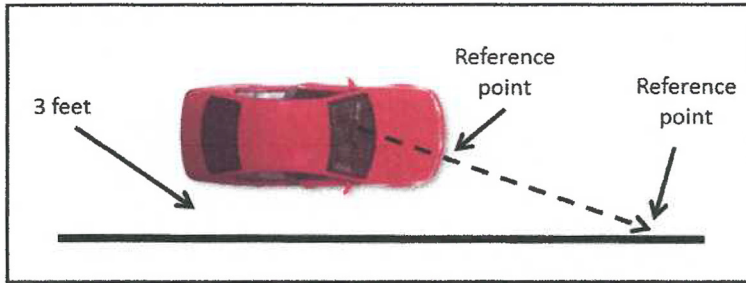
**Vehicle Reference Points**

**Right Side Vehicle Reference Points**

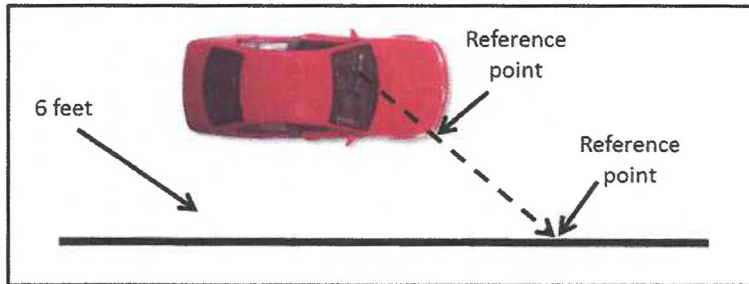
Drivers can develop reference points to determine where the right side of the vehicle is positioned when curb parking on the right side or when placing the vehicle 3-6 inches from a white line or curb. The line of sight reference is to align the center of the vehicle to the curb or the edge line of the roadway.



To determine when the right side of the vehicle is three feet from the curb or line, the line of sight reference is to align the right ¼ section of the hood to the curb or the edge line of the roadway.



To determine when the right side of your vehicle is six feet from the curb or line, the line of sight reference is to align the right headlight to the curb or the edge line of the roadway.



Vehicle Reference Points

Left Side Vehicle Reference Points

Drivers can develop reference points to determine where the left side of the vehicle is when curb parking on the left side or when placing the vehicle 3-6 inches from a white line, curb, double solid yellow centerline, or broken centerline. The line of sight reference is about one foot from the left side or the crack line between the left fender and the hood of your vehicle to the curb or left side of the vehicle.

